

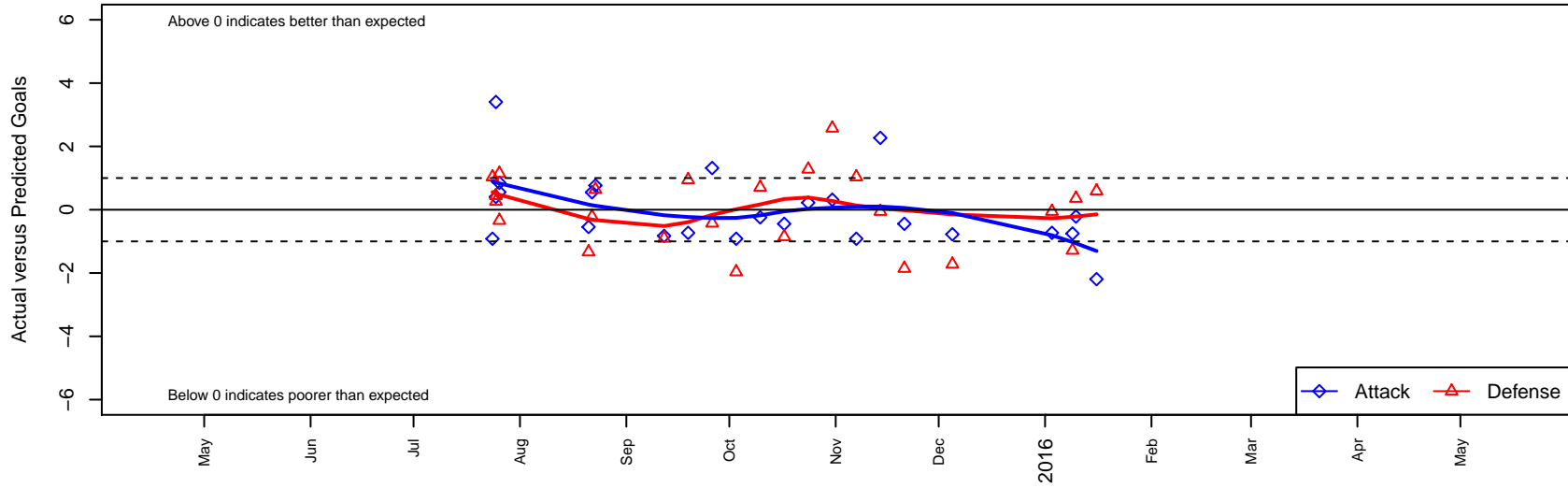
NSC Fire G03

North Shore SC
 Woodinville, WA
 G03 total strength=542
 attack=0.38 defense=0.44
 fall league = NPSL Div 1 U12

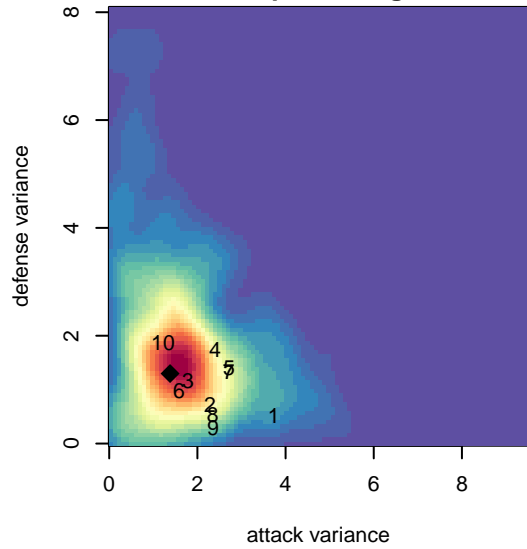
alt names used:
 NSC Fire
 NSC Fire
 NSC G03 Fire

Venues played:
 2015 Crossfire Select GU12 Silver
 2015 Xtreme Cup GU12 Gold
 2015 NPSL Division 1 U12
 2015 Founders Cup G03

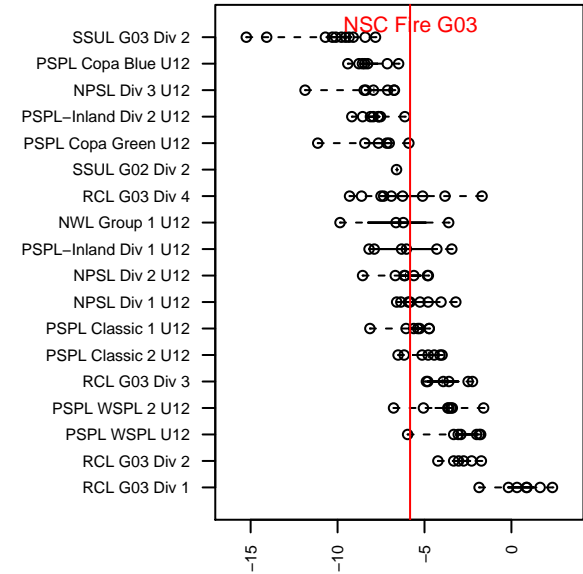
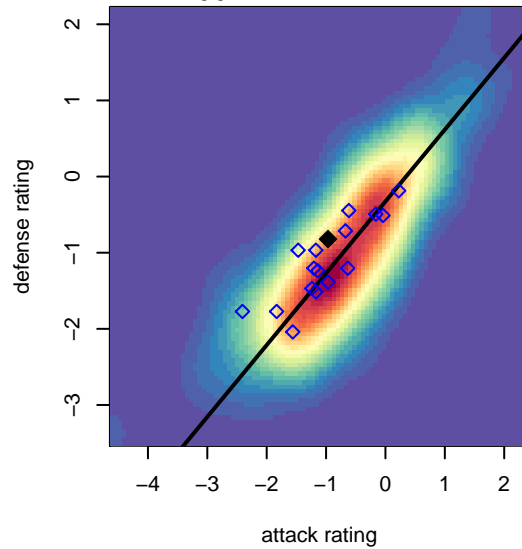
NSC Fire G03
 Dots are actual minus expected GF (blue circles) and GA (red triangles).
 Blue line is smoothed change in attack strength. Red is smoothed change in defense strength.



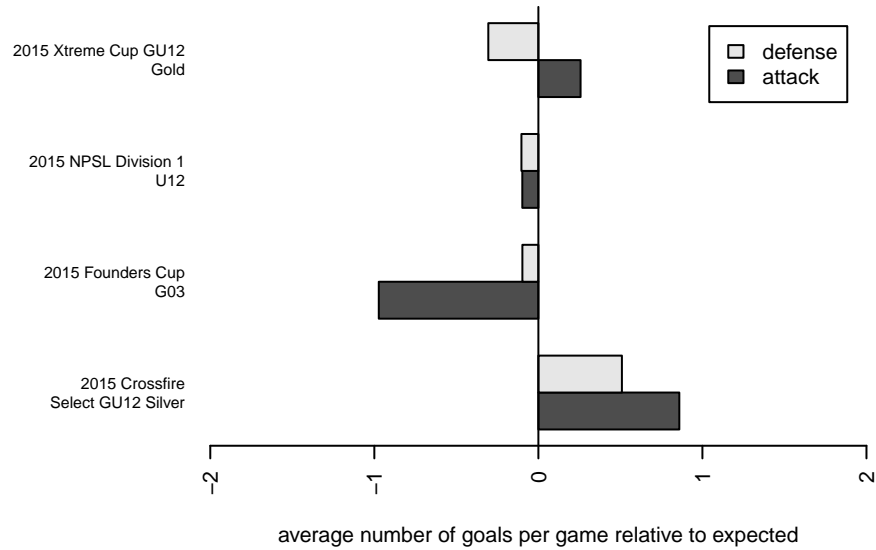
**attack and defense variance (black dot)
relative to other teams
and top 10 in region**



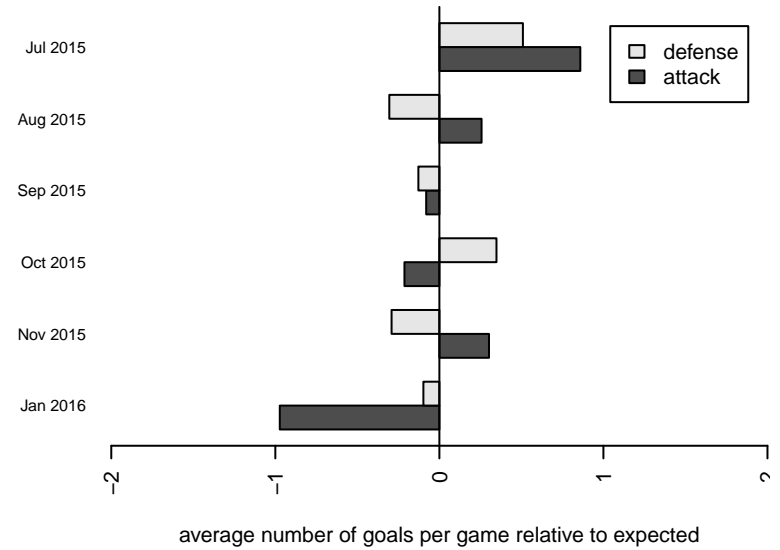
**attack and defense rating
relative to others at age
and all opponents in last 13 months**



Performance relative to 13 month average



Performance relative to 13 month average



| date | home | | away | | venue | pred.home | pred.away |
|-------------|--------------------------------|---|--------------------------------|---|-----------------------------------|------------------|------------------|
| 2016-01-16 | Crossfire Select Bates G03 | 0 | NSC Fire G03 | 0 | 2015 Founders Cup G03 | 0.59 | 2.19 |
| 2016-01-10 | NSC Fire G03 | 2 | Washington Timbers Lime G03 | 0 | 2015 Founders Cup G03 | 2.22 | 0.36 |
| 2016-01-09 | Pacific FC Breakers G03 | 3 | NSC Fire G03 | 0 | 2015 Founders Cup G03 | 1.72 | 0.75 |
| 2016-01-03 | NSC Fire G03 | 1 | Seattle United NE Blue G03 | 1 | 2015 Founders Cup G03 | 1.73 | 0.94 |
| 2015-12-05 | NSC Fire G03 | 0 | Crossfire Select Tacey G03 | 3 | 2015 NPSL Division 1 U12 | 0.78 | 1.28 |
| 2015-11-21 | NSC Fire G03 | 1 | Crossfire Select MacDonald G03 | 3 | 2015 NPSL Division 1 U12 | 1.45 | 1.15 |
| 2015-11-14 | Seattle United NE Blue G03 | 1 | NSC Fire G03 | 4 | 2015 NPSL Division 1 U12 | 0.94 | 1.73 |
| 2015-11-07 | NSC Fire G03 | 0 | Seattle United S Blue G03 | 1 | 2015 NPSL Division 1 U12 | 0.92 | 2.04 |
| 2015-10-31 | NSC Fire G03 | 1 | PSA Force G03 | 0 | 2015 NPSL Division 1 U12 | 0.68 | 2.57 |
| 2015-10-24 | Crossfire Select Tacey G03 | 0 | NSC Fire G03 | 1 | 2015 NPSL Division 1 U12 | 1.28 | 0.78 |
| 2015-10-17 | Crossfire Select MacDonald G03 | 2 | NSC Fire G03 | 1 | 2015 NPSL Division 1 U12 | 1.15 | 1.45 |
| 2015-10-10 | NSC Spark G03 | 0 | NSC Fire G03 | 1 | 2015 NPSL Division 1 U12 | 0.71 | 1.24 |
| 2015-10-03 | Seattle United S Blue G03 | 4 | NSC Fire G03 | 0 | 2015 NPSL Division 1 U12 | 2.04 | 0.92 |
| 2015-09-26 | PSA Force G03 | 3 | NSC Fire G03 | 2 | 2015 NPSL Division 1 U12 | 2.57 | 0.68 |
| 2015-09-19 | NSC Fire G03 | 1 | Seattle United NE Blue G03 | 0 | 2015 NPSL Division 1 U12 | 1.73 | 0.94 |
| 2015-09-12 | NSC Fire G03 | 0 | BYSC Select Nicholson G03 | 2 | 2015 NPSL Division 1 U12 | 0.83 | 1.10 |
| 2015-08-23 | NSC Fire G03 | 2 | Silver Lake SC Thunder G03 | 0 | 2015 Xtreme Cup GU12 Gold | 1.23 | 0.64 |
| 2015-08-22 | NSC Fire G03 | 2 | Seattle Celtic White G03 | 1 | 2015 Xtreme Cup GU12 Gold | 1.45 | 0.78 |
| 2015-08-21 | NSC Fire G03 | 1 | Lake Hills Blue Dynamite G03 | 2 | 2015 Xtreme Cup GU12 Gold | 1.55 | 0.66 |
| 2015-07-26 | NSC Fire G03 | 2 | Crossfire Select MacDonald G03 | 0 | 2015 Crossfire Select GU12 Silver | 1.45 | 1.15 |
| 2015-07-26 | Cascade FC G03 | 1 | NSC Fire G03 | 2 | 2015 Crossfire Select GU12 Silver | 0.66 | 1.15 |
| 2015-07-25 | NSC Fire G03 | 4 | ISC Gunners Select G03 | 0 | 2015 Crossfire Select GU12 Silver | 3.59 | 0.44 |
| 2015-07-25 | Kitsap Alliance Black G03 | 0 | NSC Fire G03 | 6 | 2015 Crossfire Select GU12 Silver | 0.26 | 2.60 |
| 2015-07-24 | Seattle United S Blue G03 | 1 | NSC Fire G03 | 0 | 2015 Crossfire Select GU12 Silver | 2.04 | 0.92 |